

## **LATEST RESULTS UPGRADE “SOUTHERN ZONE” MINERALISATION**

**Results from 1m resplits have confirmed and upgraded the tenor of gold mineralisation at the “Southern Zone” (Andy Well).**

- **8m @ 13.9g/t from 46-54m in MNCR009 including 2m @ 51.1g/t from 46-48m**

**Second drill program at Andy Well scheduled for mid-late May.**

**Doray Minerals Limited** (ASX: DRM, Doray) today announced it has received results from 1m re-splits of previously announced intersections at the “Southern Zone” within the Andy Well gold prospect.

Andy Well is located within the Meekatharra North Project (Doray 80%) in the northern Murchison Region of Western Australia. The Southern Zone is located approximately 1km south of the recently discovered Wilber Lode (ASX Release 30/3/10) in what appears to be a parallel NE-trending mineralised structure (Figure 1).

The results, from reassay of 1m splits by the fire assay method, upgrade the previously reported intersection in MNRC009 to **8m @ 13.9g/t including 2m @ 51.1g/t from 46m** (previously 6m @ 8.5g/t) and therefore confirm the presence of a second zone of very high-grade gold mineralisation at Andy Well.

Table 1 lists a comparison of original 3m composite assays for the Southern Zone and resulting 1m re-splits, assayed by 50g fire assay technique. All results from original and resplit assays have now been received from the first drilling campaign at Andy Well.

Figure 2 shows a plan view of the Southern Zone with all historic and recent drilling shown. The results so far indicate the presence of a mineralised NE-trending quartz lode hosted in sheared mafic rocks. Importantly, MNC20, drilled by a previous explorer, ended in mineralisation at 85m.

Doray wishes to advise that it is currently finalising permitting and approvals for the second drilling campaign at Andy Well, which is due to commence in mid-late May, and has commenced a detailed low-level aeromagnetic survey over its Nuckulla Hill gold project in South Australia.

-ENDS-

**For further information, please contact:**

**Allan Kelly**  
Managing Director  
Doray Minerals Limited  
08 9226 0600  
[info@dorayminerals.com.au](mailto:info@dorayminerals.com.au)

**Ann M Nahajski**  
Director  
AMN Corporate  
+61 (0)4 00 205 433  
[ann@amncorporate.com](mailto:ann@amncorporate.com)

## APPENDIX

Hole	Original Composite Assay (aqua-regia)				1m Fire Assay			
	From (m)	To (m)	Interval (m)	Grade (g/t)	From (m)	To (m)	Interval (m)	Grade (g/t)
MNRC009 667442E 7097198N -60/90	45	48	3	1.6	45	46	1	0.35
					<b>46</b>	<b>47</b>	<b>1</b>	<b>63.73</b>
					<b>47</b>	<b>48</b>	<b>1</b>	<b>38.55</b>
	<b>48</b>	<b>51</b>	<b>3</b>	<b>9.88</b>	48	49	1	0.53
					49	50	1	1.4
					50	51	1	3.35
	<b>51</b>	<b>54</b>	<b>3</b>	<b>7.12</b>	51	52	1	1.86
					52	53	1	0.78
					53	54	1	1.22
	57	60	3	0.92	57	58	1	0.26
					58	59	1	0.54
					59	60	1	1.45

**Table 1.** Comparison of original and re-splits for significant results from Southern Zone.

*NOTE: Samples from the Southern zone were initially assayed as 3m composites using standard aqua-regia digest/AAS technique with 0.01ppm detection limit. Selected samples were subsequently re-sampled to 1m intervals and re-assayed by 50g fire assay with 0.01ppm lower detection limit.*

### Competent Person Statement

The information in this announcement that relates to Exploration Results is based on information compiled by Heath Hellewell and Allan Kelly. Mr. Hellewell and Mr. Kelly are both members of the Australian Institute of Geoscientists and have sufficient experience, which is relevant to the style of mineralisation and type of deposit under consideration and to the activity, which they are undertaking. This qualifies Mr. Hellewell and Mr. Kelly as "Competent Persons" as defined in the 2004 edition of the 'Australasian Code for Reporting of Exploration Results, Mineral Resources and Ore Reserves'. Mr. Hellewell and Mr. Kelly consent to the inclusion of information in this announcement in the form and context in which it appears.

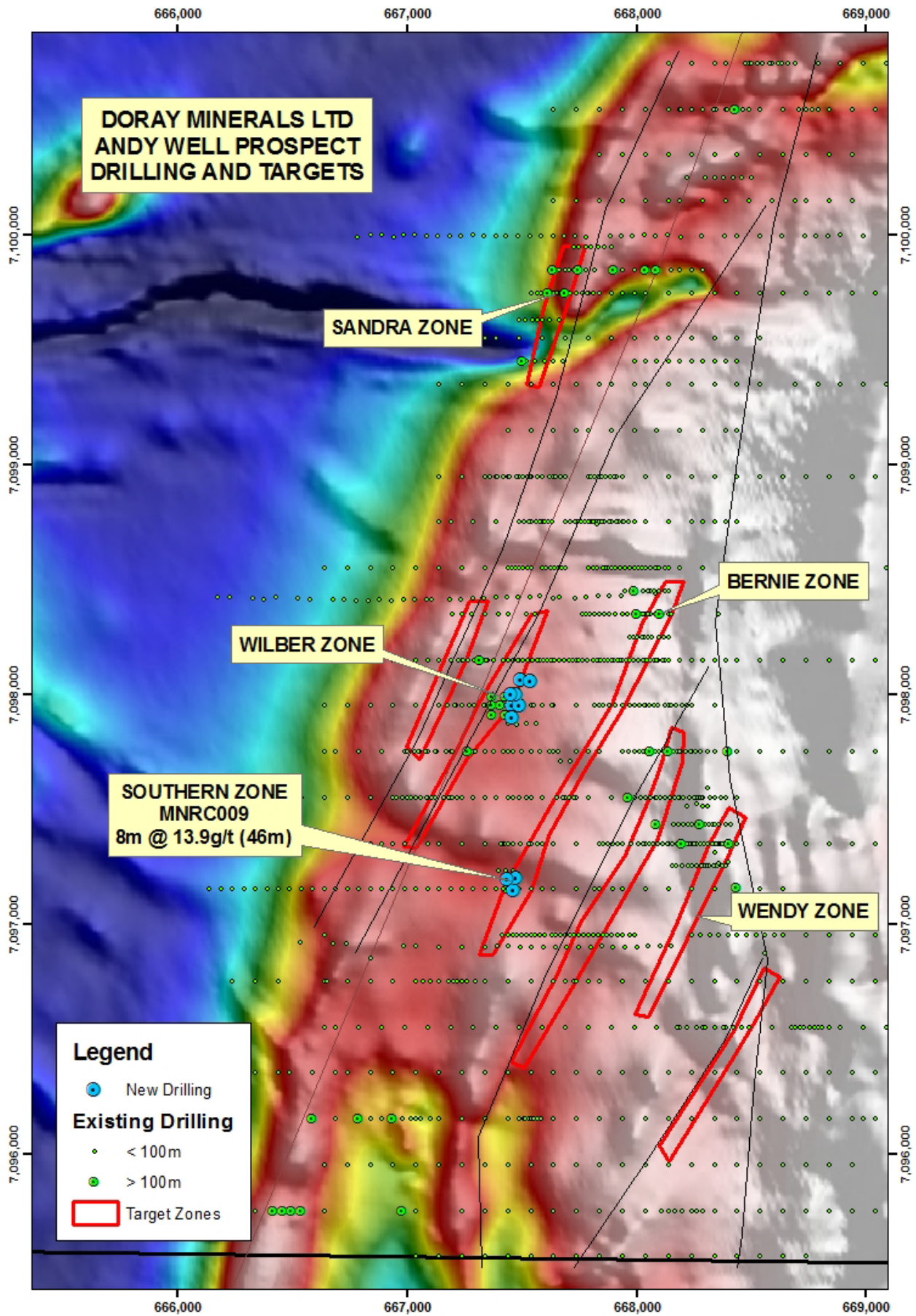


Figure 1. Plan showing location of Southern Zone in relation to Wilber Lode.

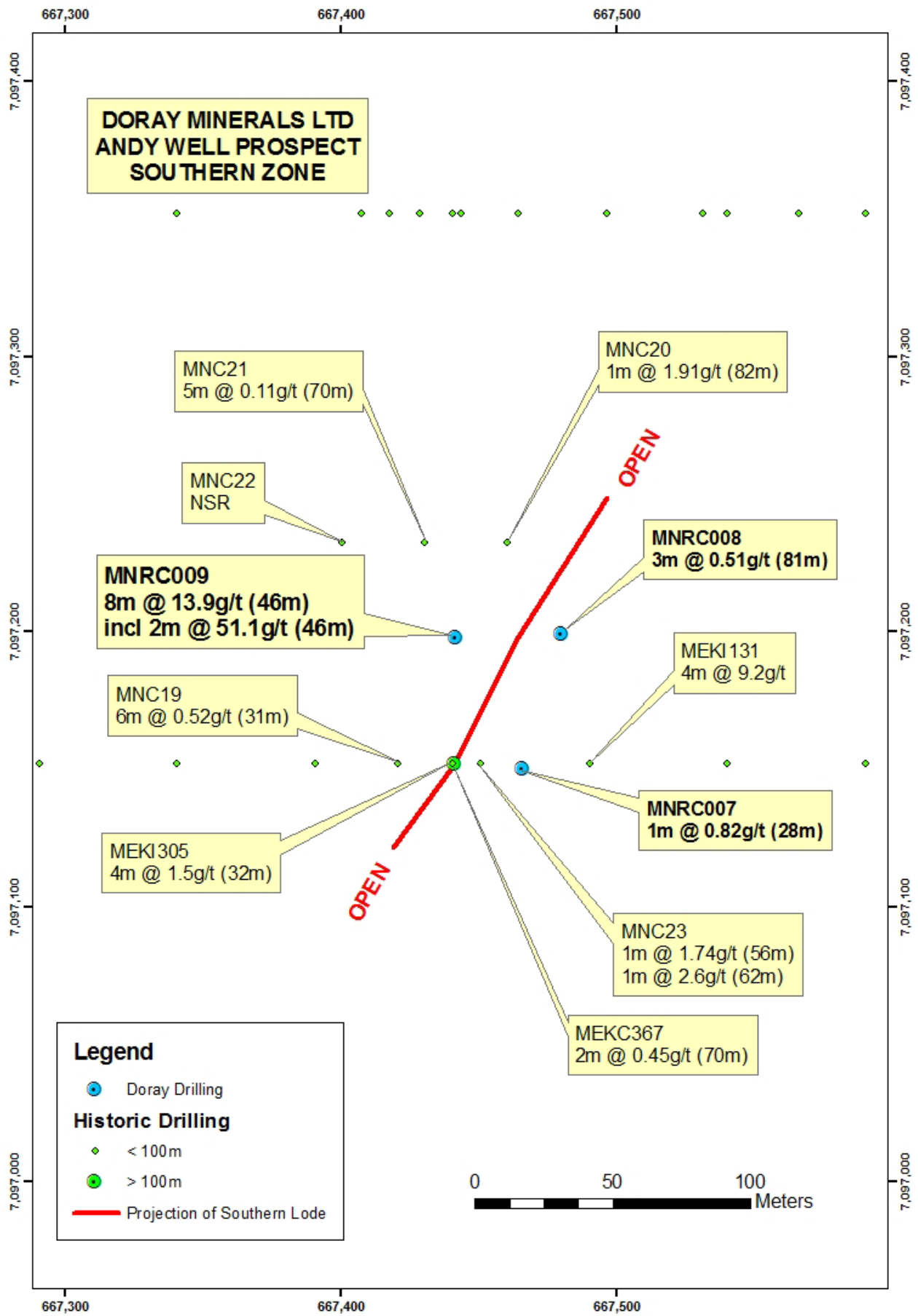


Figure 2. Plan of drilling at Southern Zone.